



# RF Test Socket w/Replaceable Contact Strips

## FEATURES

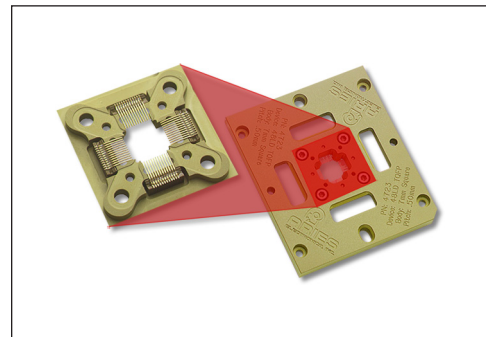
- User replaceable patented Microstrip™ contacts which lie flat on the DUT board, and become part of the transmission line decreasing down-time.
- Same high-frequency performance of our standard Microstrip™ contacts.
- Available in Pb pitches from 0.4mm to 5.0mm.
- Easy to use removal and insertion tool shipped with every order.
- Replaceable contact strips available in just 1 week.
- Socket alignment pins provide accurate socket location to test board.
- Frequency response data available up to 19GHz.

## GENERAL SPECIFICATIONS

- SOCKET BODY MATERIAL: either PEEK or Torlon® PAI
- HARDWARE: Stainless Steel
- CONTACT RESISTANCE: <70 mΩ
- CONTACT INDUCTANCE: 0.01nH
- ESTIMATED CONTACT LIFE: 500,000 cycles
- CONTACT FORCE: Consult Factory
- INSERTION LOSS: <1dB to 16.7GHz (at 0.50mm pitch).

## MOUNTING CONSIDERATIONS

- SUGGESTED MOUNTING HOLE SIZE: 0.120 [3.05] 4 places for #4-40 Screws
- SUGGESTED LOCATING PIN HOLE SIZE: 0.063 [1.6] 4 places
- SUGGESTED TEST BOARD PLATING: 30μ min. hard Au over 50μ min. Ni



**CUSTOMIZATION:** In addition to the standard products shown on this page, Aries specializes in custom design and production. Special materials, platings, sizes, and configurations can be furnished, depending on the quantity. **NOTE:** Aries reserves the right to change product general specifications without notice.

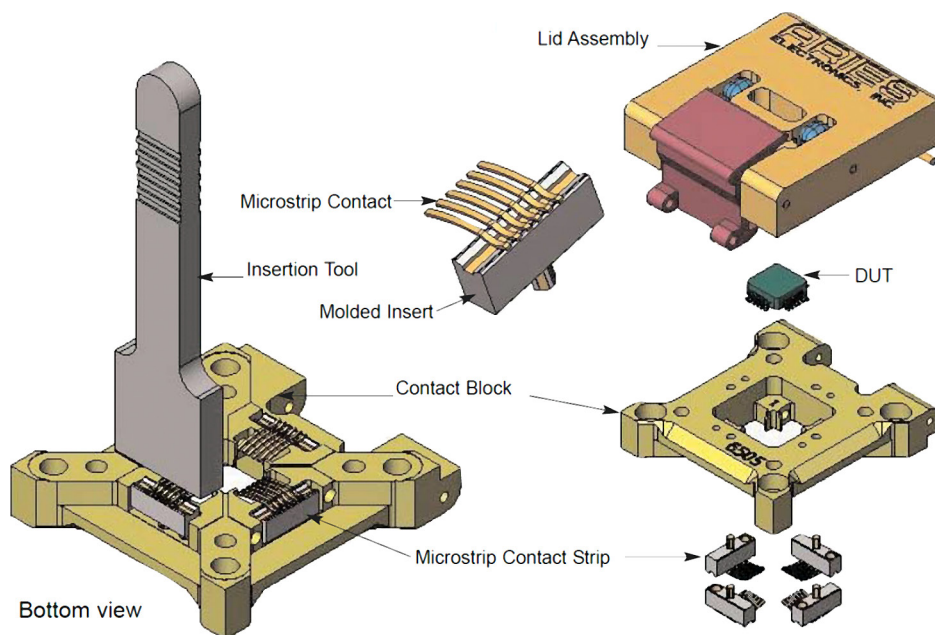
## ORDERING INFORMATION

Consult Factory for P/N

ALL DIMENSIONS: INCHES [MILLIMETERS]

ALL TOLERANCES: ±0.005 [0.13] UNLESS OTHERWISE SPECIFIED

CONSULT FACTORY FOR OTHER SIZES AND CONFIGURATIONS



**ARIES**  
ELECTRONICS, INC.

Bristol, PA 19007-6810 USA  
TEL (215) 781-9956 • FAX (215) 781-9845  
[WWW.ARIESELEC.COM](http://WWW.ARIESELEC.COM) • [INFO@ARIESELEC.COM](mailto:INFO@ARIESELEC.COM)



PRINTOUTS OF THIS DOCUMENT MAY BE OUT OF DATE AND SHOULD BE CONSIDERED UNCONTROLLED

24001  
Rev. AA