

# IDS-5642-I+

## >> Industrial Security 4-port Isolate RS422/485 to 2-port 10/100TX Device Server

- Data Security : SSL encryption
- Internet Community : PPPoE
- Update DNS Hostname : DDNS
- Command Port command support
- Redundant Dual Ethernet Ports : Recovery time < 10ms
- Switch Mode Supported: Daisy Chain support to reduce usage of switch ports
- NAT-pass through : User can manage IDS-5642-I+ through NAT router
- Redundant Power Inputs : 12~48VDC on terminal block
- Redundant multiple host devices : 5 simultaneous in Virtual COM, TCP Server, TCP Client mode, UDP
- Secured Management by HTTPS and SSH
- Versatile Modes : Virtual Com, Serial Tunnel, TCP Server, TCP Client, UDP
- Event Warning by Syslog, Email, SNMP trap, and Beeper
- Various Windows O.S. supported : Windows NT/2000/XP/2003/ VISTA 32 bits



### > Features

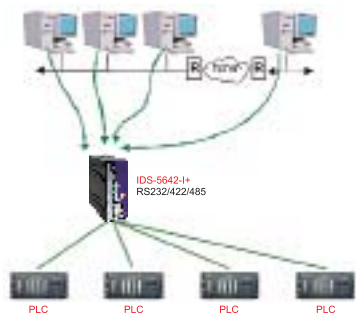
- Dual redundant Ethernet port support redundant mode (Recovery time < 10ms)
- Ethernet switch mode enable Daisy Chain
- Redundant 5 multiple host devices supported to protect your industrial network
- Versatile modes & event alarm by e-mail
- HTTPs & SSH protocol supported for secured management
- NAT router pass through
- Console command control
- SSL encryption for Security data transfer
- PPPoE for internet community
- DDNS for domain name service
- IP table to prevent access from unauthorized IP address
- Configurable by Web-based and Windows utility (**DS-Tool**)
- 2KV isolation for RS422/485 serial port
- 1KV isolation for PoE PD port
- Dual redundant DC power inputs of terminal block
- Rigid IP-30 housing design
- DIN-Rail and panel mounting enabled

### > Introduction

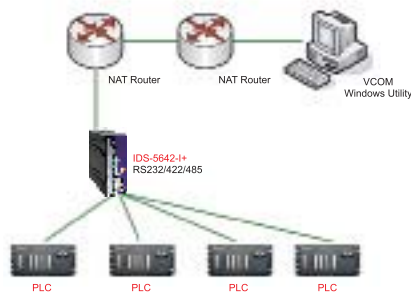
IDS-5642-I+ is an innovative 4 port isolated RS422/485 to 2 ports LAN redundant security device server. To assure the agility and security of critical data, IDS-5642-I+ offers many powerful features for HW & SW redundant functions. When the connection between master-link and LAN fails, IDS-5642-I+ can automatically switch to another LAN port within 10ms, and still guarantees a non-stop connection. IDS-5642-I+ also supports switch mode, users can use Daisy Chain to reduce the usage of Ethernet switch ports. Secondly, IDS-5642-I+ can simultaneously transfer SSL encryption data into 5 host PCs. This feature can assure all critical data that saved in different host PC to avoid Ethernet break or host PCs failure. Thirdly, IDS-5642-I+ provides dual redundant power inputs on DC power jack and terminal block. IDS-5642-I+ also provides NAT pass through function so that users are able to manage IDS-5642-I+ inside or outside the NAT router. It is easy for different IP domain users to use IDS-5642-I+. In addition, IDS-5642-I+ also support PoE. PD on ETH2. This feature is fully compliant with IEEE802.3af standard. Therefore, IDS-5642-I+ is one of the best security communication redundant solutions for application of serial devices.

## > DS-Tool

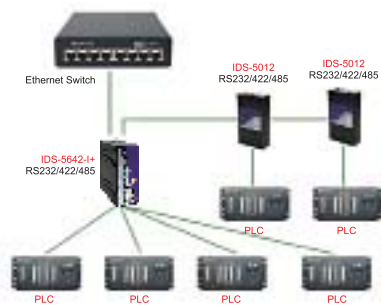
In practical operation of serial device servers, Windows utility (DS-Tool) is supported. This utility is very helpful for you to manage and monitor all of industrial device servers on the industrial network.



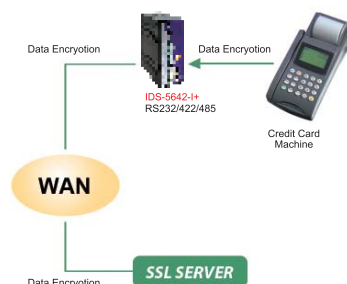
Redundancy 5Host Devices



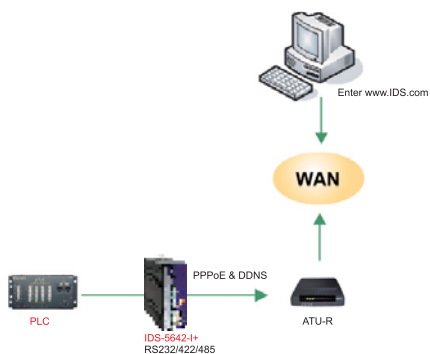
NAT Router Pass Through



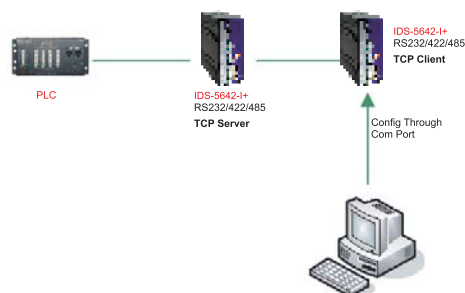
Daisy Chain Switch Mode



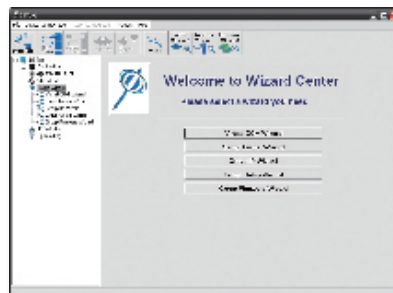
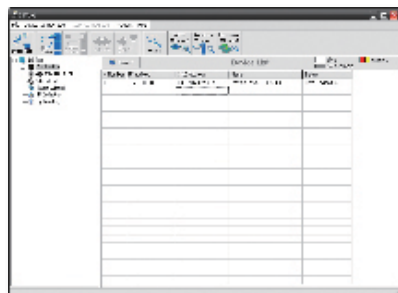
SSL Data Encryption



Connect Through PPPoE / DDNS

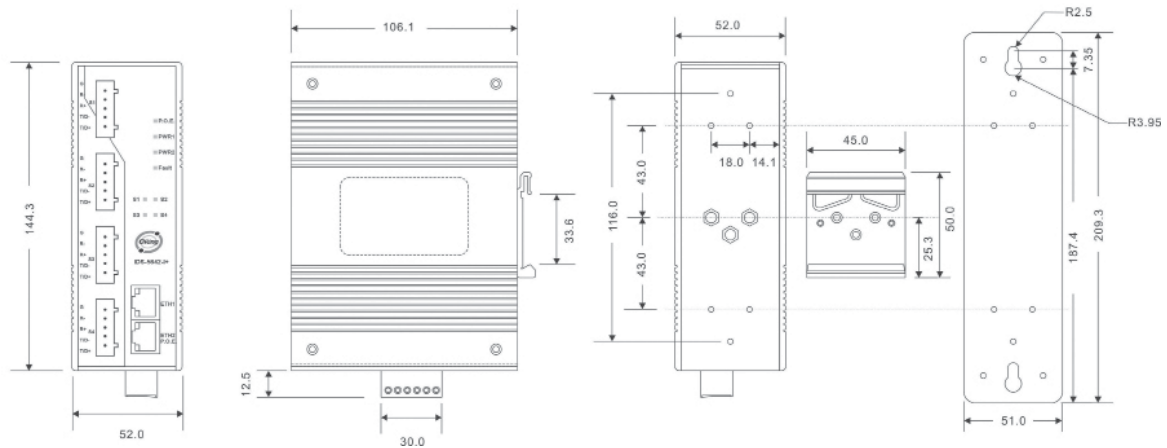


COM Port Command



Monitoring and Configuration interface

## > Dimension



Unit=mm

## > Specifications

ORing Device Server Model	IDS-5642-I+
<b>Physical Ports</b>	
10/100 Base-T(X) Ports in RJ45 Auto MDI/MDIX	2
PoE. Feature	PoE.Present at ETH2 Power Device (IEEE 802.3af): IEEE 802.3af compliant input interface Power consumption: 8Watts max. Over load & short circuit protection Isolation Voltage: 1000 VDC min. Isolation Resistance : 10 <sup>8</sup> ohms min
<b>Serial Ports</b>	
Connector	5 pin terminal block x 4
Operation Mode	RS422 / 4(2)-Wire RS485. Which can be configured by DS-Tool
Serial Baud Rate	110 bps to 460.8 Kbps
Data Bits	5, 6, 7, 8
Parity	odd, even, none, mark, space
Stop Bits	1, 1.5, 2
RS-232	TxD, Rx D, RTS, CTS, DTR, DSR, DCD, RI, GND
RS-422	Tx+,Tx-, Rx+, Rx-,GND
RS-485 (4-wire)	Tx+,Tx-, Rx+, Rx-,GND
RS-485 (2-wire)	Data+, Data-,GND
Isolating	2KV
Flow Control	XON/XOFF, RTS/CTS, DTR/DSR
<b>LED indicators</b>	
Power indicator	PWR 1(2) / Ready: Red On: Power is on and booting up. Red Blinking: Indicates an IP conflict, or DHCP or BOOTP server did not respond properly. Green On: Power is on and functioning Normally. Green Blinking: Located by Administrator.
10/100TX RJ45 port indicator	Green for port Link/Act at 100Mbps. Amber for port Link/Act at 10Mbps.
Serial TX / RX LEDs:	Red: Serial port is receiving data Green: Serial port is transmitting data

Power	
Redundant Input power	Dual DC inputs. 12-48VDC on 6-pin terminal block
Power consumption (Typ.)	6.5 Watts
Overload current protection	Present
Reverse polarity protection	Present on terminal block
Physical Characteristic	
Enclosure	IP-30
Dimension (W x D x H)	52(W) x 106.1(D) x 144.3(H) mm (2.05x4.18x5.68 inch.)
Weight (g)	667 g
Environmental	
Storage Temperature	-40 to 85°C (-40 to 185°F)
Operating Temperature	-10 to 60°C (14 to 140°F)
Operating Humidity	5% to 95% Non-condensing
Regulatory approvals	
EMI	FCC Part 15, CISPR (EN55022) class A
EMS	EN61000-4-2 (ESD), EN61000-4-3 (RS), EN61000-4-4 (EFT), EN61000-4-5 (Surge), EN61000-4-6 (CS), EN61000-4-8, EN61000-4-11
Shock	IEC60068-2-27
Free Fall	IEC60068-2-32
Vibration	IEC60068-2-6
Safety	EN60950
Warranty	5 years

> Ordering Information

IDS-56 A B - C D

Code Definition	Serial Port Number	Ethernet Port Number	Serial Port Identification	PoE Identification
Option	- 4: 4 ports	- 2: 2 ports	- I: Serial port are isolated RS-422/485	- "+": PoE. PD present at ETH2

Available Model	Model Name	Description
	IDS-5642-I+	Industrial security 4-port isolate RS422/485 to 2-port LAN Device Server with 1-port PoE PD