

# IDS-5611F

## >> Industrial Security 1-port RS232/422/485 to 1-port 100FX Device Server

- Data Security : SSL encryption
- Internet Community : PPPoE
- DNS Hostname: DDNS
- NAT-pass through: User can manage IDS-5611F through NAT router
- Redundant Power Inputs: 12~48VDC on power jack and terminal block
- Redundant multiple host devices: 5 simultaneous in Virtual COM, TCP Server, TCP Client mode, UDP
- Secured Management by HTTPS and SSH
- Management by Console
- Versatile Modes: Virtual Com, Serial Tunnel, TCP Server, TCP Client, UDP
- Event Warning by Syslog, Email, SNMP trap, and Beeper
- Various Windows O.S. supported : Windows NT/2000/ XP/ 2003/ VISTA 32 bits



### > Features

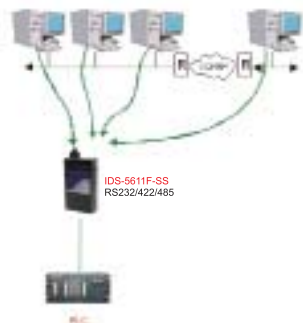
- Redundant 5 multiple host devices supported to protect your industrial network
- Versatile modes & event alarm by e-mail
- HTTPs & SSH protocol supported for secured management
- NAT router pass through
- Console command control
- SSL encryption for Security data transfer
- PPPoE for internet community
- DDNS for domain name service
- IP table to prevent access from unauthorized IP address
- Configurable by Web-based and Windows utility (**DS-Tool**)
- Dual redundant DC power inputs of terminal block and power jack
- Rigid IP-30 housing design
- DIN-Rail and panel mounting enabled

### > Introduction

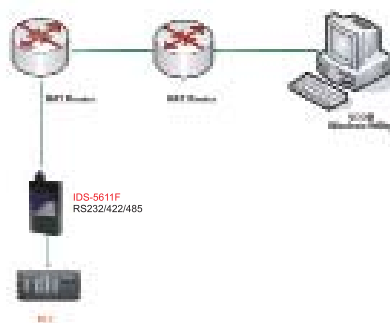
IDS-5611F is an innovative 1 port RS232/422/485 to 1 port fiber optical security device server. To assure the agility and security of critical data, IDS-5611F offers many powerful features for SW redundant functions. IDS-5611F can simultaneously transfer SSL encryption data into 5 host PCs. This feature can assure all critical data that saved in different host PC to avoid Ethernet break or host PCs failure. Secondly, the IDS- 5611F provides dual redundant power inputs on DC power jack and terminal block. IDS-5611F also provides NAT pass through function so that users are able to manage IDS-5611F inside or outside the NAT router. It is easy for different IP domain users to use IDS-5611F. Therefore, IDS-5611F is one of the best security communication redundant solutions for current application of serial devices with fiber optical interface.

## > DS-Tool

In practical operation of serial device servers, Windows utility (DS-Tool) is supported. This utility is very helpful for you to manage and monitor all of industrial device servers on the industrial network.



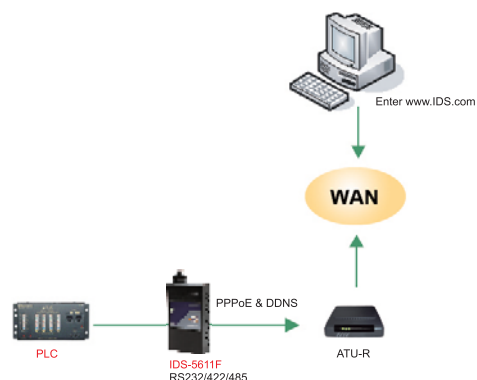
Redundancy 5Host Devices



NAT Router Pass Through



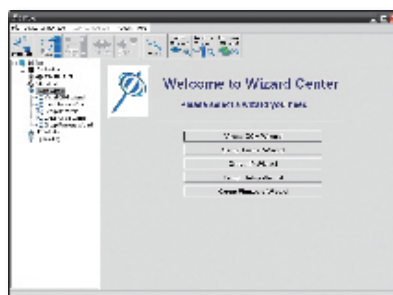
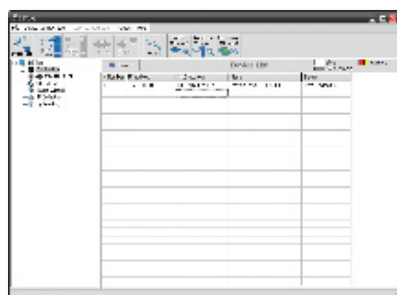
SSL Data Encryption



Connect Through PPPoE / DDNS

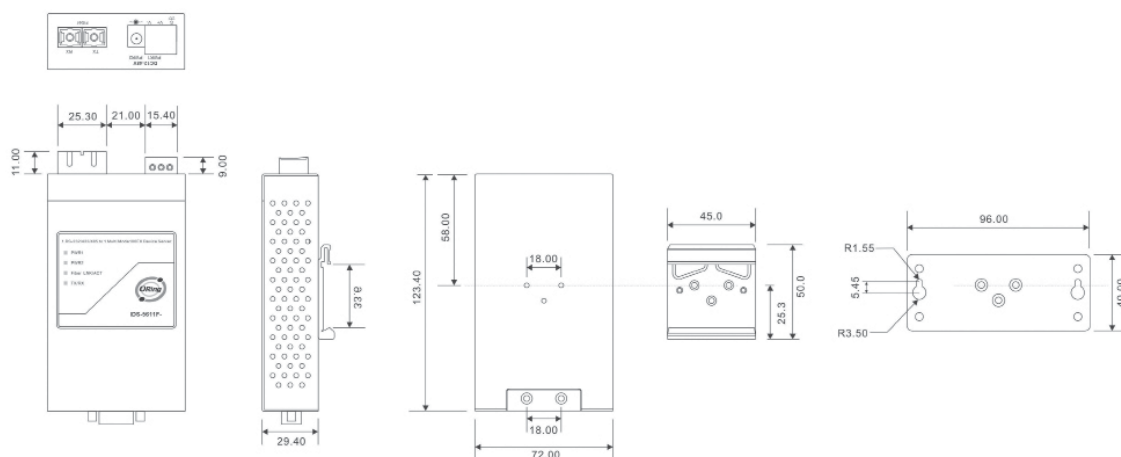


COM Port Command



Monitoring and Configuration interface

## > Dimension



Unit=mm

## > Specifications

ORing Device Server Model	IDS-5611F-MM	IDS-5611F-SS
Fiber Port		
100Base-FX Multimode ports (2KM, 1310nm, SC connector)	1	
100Base-FX Singlemode ports (30KM, 1310nm, SC connector)		1
Serial Ports		
Connector	DB9 x 1	
Operation Mode	RS232 / RS422 / 4(2)-Wire RS485. Which can be configured by DS-Tool	
Serial Baud Rate	110 bps to 460.8 Kbps	
Data Bits	5, 6, 7, 8	
Parity	odd, even, none, mark, space	
Stop Bits	1, 1.5, 2	
RS-232	TxD, RxD, RTS, CTS, DTR, DSR, DCD, RI, GND	
RS-422	Tx+,Tx-, Rx+, Rx-,GND	
RS-485 (4-wire)	Tx+,Tx-, Rx+, Rx-,GND	
RS-485 (2-wire)	Data+, Data-,GND	
Flow Control	XON/XOFF, RTS/CTS, DTR/DSR	
LED indicators		
Power indicator	PWR 1(2) / Ready: Red On: Power is on and booting up. Red Blinking: Indicates an IP conflict, or DHCP or BOOTP server did not respond properly. Green On: Power is on and functioning Normally. Green Blinking: Located by Administrator.	
100Base-FX with SC connector	Green for port Link/Act at 100Mbps.	
Serial TX / RX LEDs:	Red: Serial port is receiving data Green: Serial port is transmitting data	
Power		
Redundant Input power	Dual DC inputs. 12-48VDC on 3-pin terminal block and power jack	
Power consumption (Typ.)	4 Watts	
Overload current protection	Present	
Reverse polarity protection	Present on terminal block	

Physical Characteristic	
Enclosure	IP-30
Dimension (W x D x H)	72(W) x 29.4(D) x 123.4(H) mm (2.83x1.16x4.86 inch.)
Weight (g)	325 g
Environmental	
Storage Temperature	-40 to 85°C (-40 to 185°F)
Operating Temperature	-10 to 60°C (14 to 140°F)
Operating Humidity	5% to 95% Non-condensing
Regulatory approvals	
EMI	FCC Part 15, CISPR (EN55022) class A
EMS	EN61000-4-2 (ESD), EN61000-4-3 (RS), EN61000-4-4 (EFT), EN61000-4-5 (Surge), EN61000-4-6 (CS), EN61000-4-8, EN61000-4-11
Shock	IEC60068-2-27
Free Fall	IEC60068-2-32
Vibration	IEC60068-2-6
Safety	EN60950
<b>Warranty</b>	5 years

### > Ordering Information

IDS-56 **A** **B** **C** - **DD**

Code Definition	Serial Port Number	Ethernet Port Number	Fiber Port Identification	Fiber Optical Mode
<b>Option</b>	<b>- 01: 1 ports</b>	<b>- 1: 1 port</b>	<b>- F:</b> 100FX <b>- "":</b> 10/100TX	<b>- MM:</b> Multi-mode Fiber <b>- SS:</b> Single-mode Fiber

	Model Name	Description
Available Model	IDS-5611F-MM	Industrial security 1-port RS232/422/485 to 1-port multi-mode fiber Device Server
	IDS-5611F-SS	Industrial security 1-port RS232/422/485 to 1-port single-mode fiber Device Server