

IUSB-9041

>> 4-port USB2.0 to 1-port 10/100TX IP USB Server

- Network-enabled USB hub
- Access and monitor USB peripheral devices over TCP/IP network
- Works with existing POS or other application software
- USB 1.0 / 1.1 / 2.0 Support
- Powerful Windows utility USB-Tool
- Virtual USB driver support
- Multiple units supported per server



> Features

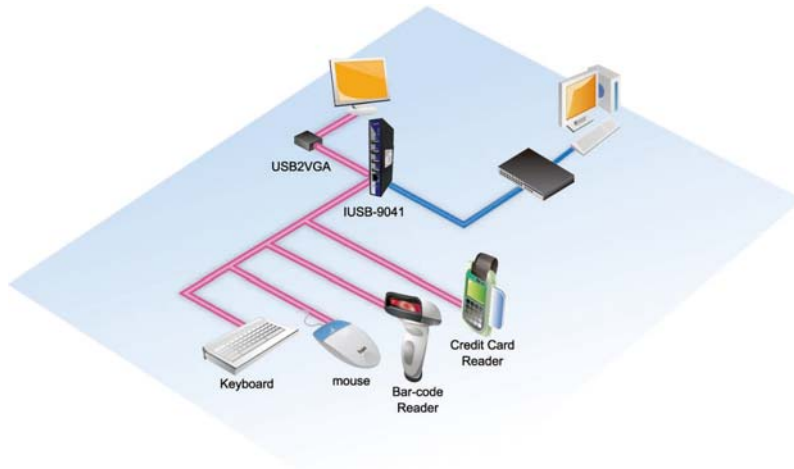
- Data rates up to 480 Mbps per USB port
- RJ-45 Ethernet to 4 USB ports
- 500 mA downstream power per USB port
- USB 1.0 / 1.1 / 2.0 Support
- USB Hub support to extend device
- Static/DHCP IP address per unit
- Multiple units supported per server
- Powerful configuration Windows utility USB-Tool
- 10/100Base-TX Ethernet support
- Rigid IP-30 housing design
- Din-Rail and panel mounting enabled

> Introduction

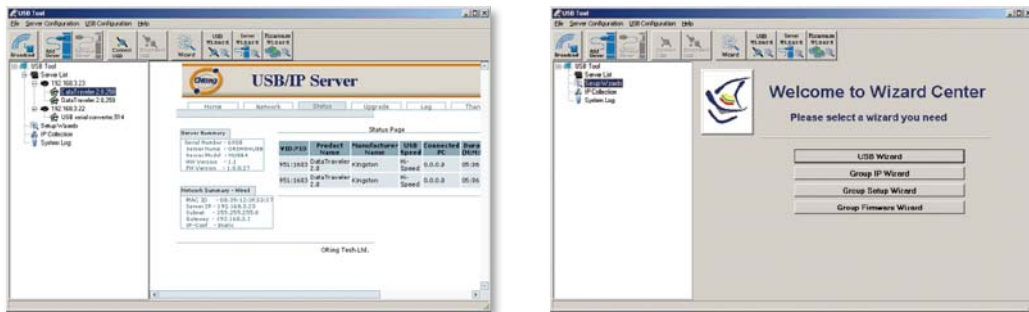
IUSB-9041 is a network-enabled USB hub. It is a powerful remote networking solution to utilize, making it easy to connect USB devices anywhere through the network, while eliminating the need for locally-attached host PCs. IUSB-9041 provides four USB 2.0 ports, which deliver the same Plug and Play experience as onboard USB ports. Software drivers are loaded onto a host PC or server, enabling remote devices to communicate with the host PC, without changing existing application software. Peripheral devices can be centrally managed and monitored from a remote server or PC via an IP address. IUSB-9041 is also compatible with Bulk or Interrupt type USB devices such as bar-code scanners, printers, fingerprint scanners, mice, pole displays, card readers, USB flash drives, web camera, and more. In addition, bundled powerful Windows utility – USB-Tool can be used to discovery, mapping USB servers in the LAN. USB-Tool also provides security functions, like Access IP list control and friendly wizards for group IP setting and firmware upgrade. User can also use web interface to manage IUSB-9041 remotely from internet.

> USB-Tool

In practical operation of IUSB-9401, users can access USB devices through the TCP/IP network remotely without the connecting USB device locally. For logistic application, zero clients can avoid the central control PC been damaged and reduce total investment. Windows utility (USB-Tool) is supported for configuration and management remotely. This utility is very helpful for you to manage and monitor all of the USB servers on the network.

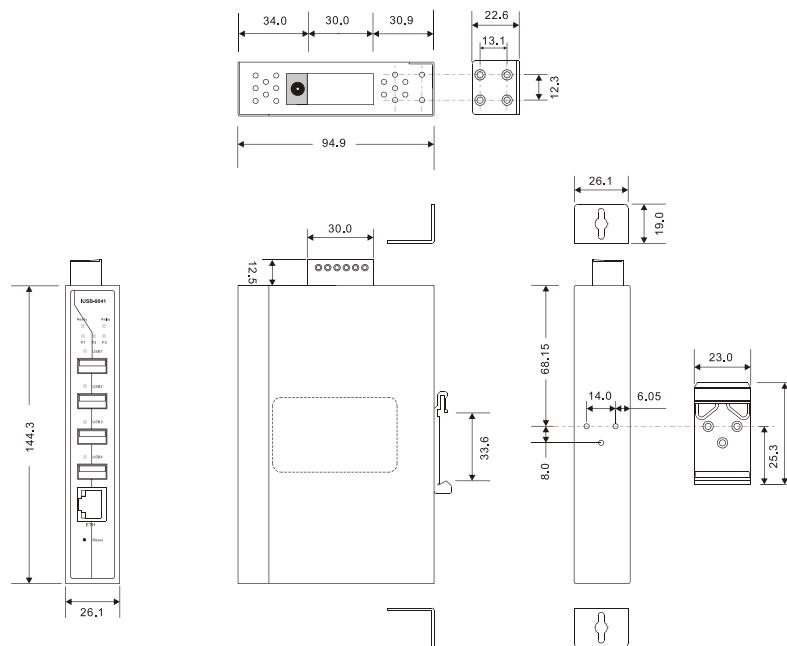


USB remote connectivity



USB-Tool : Monitoring and Configuration interface

> Dimension



(Unit=mm)

ORing Media Converter		IUSB-9041	
Physical Ports			
10/100Base-T(X) Port in RJ-45 Auto MDI/MDIX			1
USB Ports			
Connector	USB 2.0 x 4		
Operation Mode	1.0 / 1.1 / 2.0 support		
LED Indicators			
Power indicator	Power LED x 3		
Ready indicator	Green for ready		
Relay indicator	Amber for fault relay		
10/100TX RJ-45 port indicator	Green for port Link/Act. Amber for data transmitted.		
USB indicator	Green for USB port activated		
Fault contact			
Relay	Relay output to carry capacity of 1A at 24VDC		
Power			
Input Power	Triple DC inputs. 12 ~ 48 VDC on 6-pin terminal block and power jack		
Power Consumption (Typ.)	4W		
Physical Characteristic			
Enclosure	IP-30		
Dimension (W x D x H)	26.1(W) x 94.9(D) x 144.3(H) mm (1.03x3.74x5.68 inch.)		
Weight (g)	386g		
Environmental			
Storage Temperature	-40 to 85°C(-40 to 185°F)		
Operating Temperature	-10 to 60°C (14 to 140°F)		
Operating Humidity	5% to 95% Non-condensing		
Regulatory approvals			
EMI	FCC Part 15, CISPR (EN55022) class A		
EMS	EN61000-4-2 (ESD), EN61000-4-3 (RS), EN61000-4-4 (EFT), EN61000-4-5 (Surge), EN61000-4-6 (CS), EN61000-4-8, EN61000-4-11		
Shock	IEC60068-2-27		
Free Fall	IEC60068-2-32		
Vibration	IEC60068-2-6		
Safety	EN60950		
Warranty	5 years		

> Ordering Information

IUSB-9 **AA** **B** - **C**

Code Definition	Serial Port Number	10/100TX Port Number	Operating Temperature
Option	- 04 : 4 port	- 1 : 1 port	- WG : IEEE 802.11 b/g mode

Available Model	Model Name	Description	Operating Temperature
	IUSB-9041	Industrial 4-port USB2.0 to 1-port 10/100TX IP USB Server	Regular model (-10 to 60°C)